

Sekolah Pitug | Community School

by Andrew Ang Zhi Yang

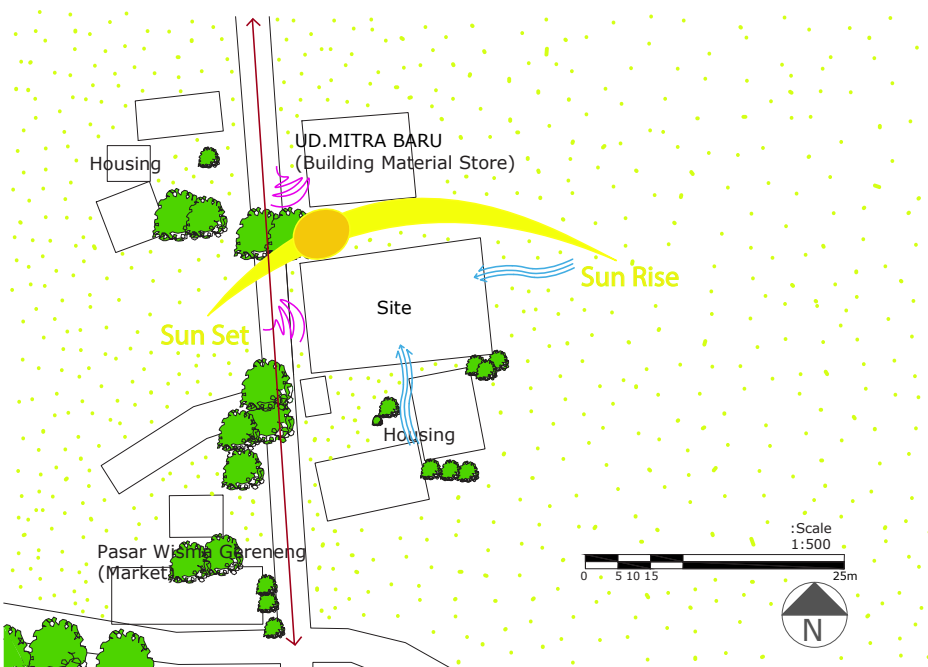
Concept
The idea is to have the school to be a place where children would be looking forward to go as they are being able to have lots of fun and learning. The design of the building creates strong air circulation and reduced glares from the sunlight through the use of louvres which builds a conducive environment for children to play and learn.



Inspiration



Site Analysis



Programs

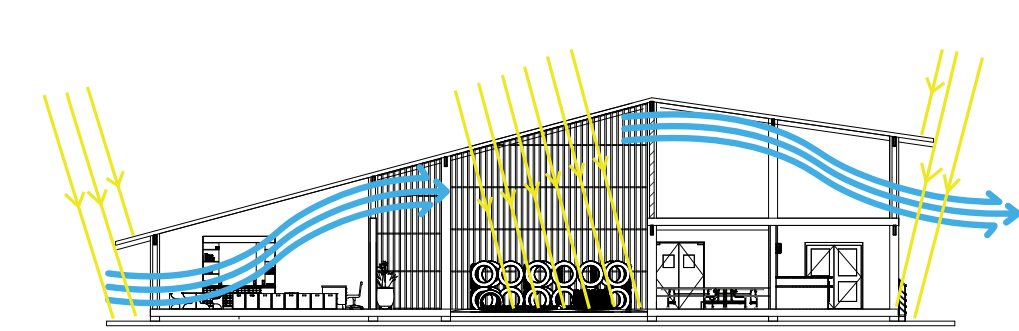
Ground Floor:
Office: 20 sqm
Kitchen: 10 sqm
Canteen: 15 sqm (2 open walls)
Restroom: 16 sqm
Playspace: Non-GFA
Classrooms: 36 sqm each
Corridor: 55 sqm (atleast 2 open walls)

Upper Floor:
Multi-Purpose Hall: 40 sqm (3 open walls)
Total Used GFA: 192/490 sqm

Materials



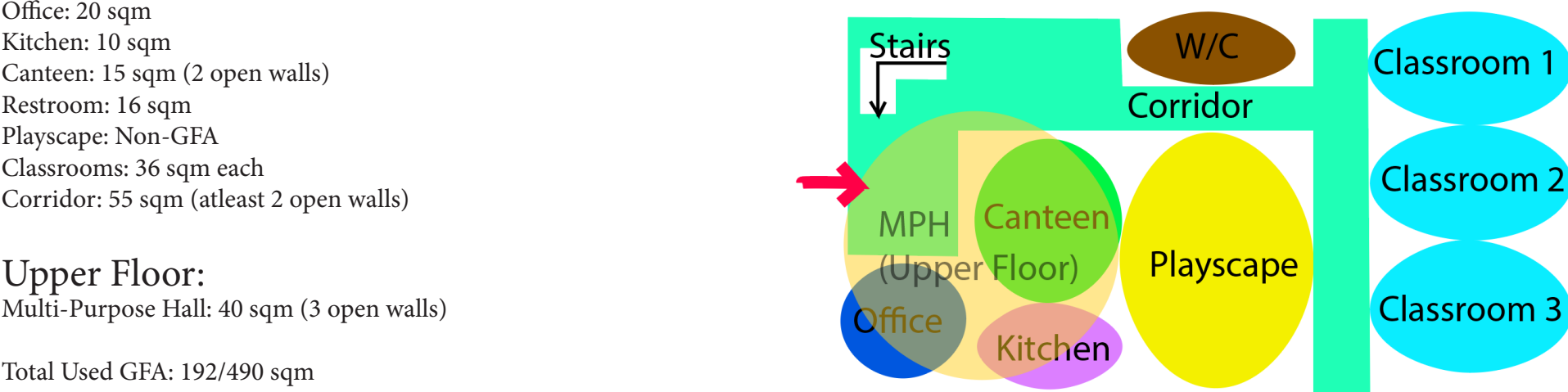
Parti-Diagram



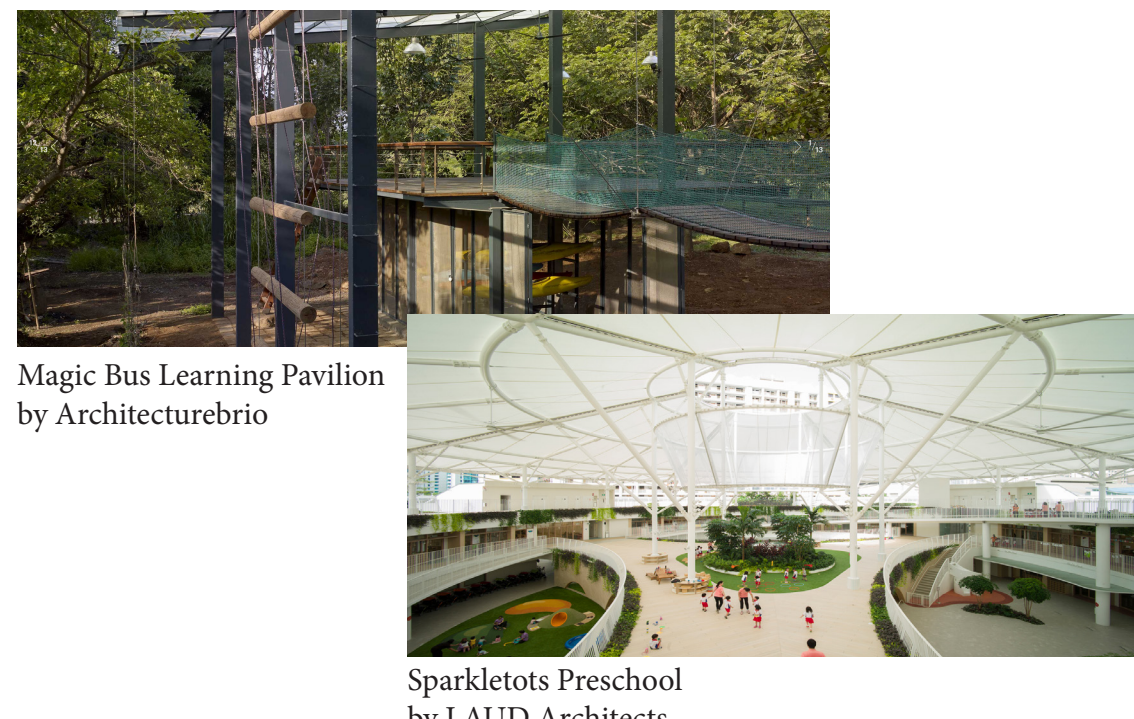
User Analysis

- Student**
Wants to play
Need space to run and climb
- Teacher**
Classroom for teacher
Office to keep documents
- Pitug Community Foundation**
Need a suitable school environment for the children
Wants to open their shops in the school
Wants something unique
- Parents**
Need to meet teachers at the office
Wants their children to spend their time wisely
- Villagers**
Wants a place to gather and pray
Community space

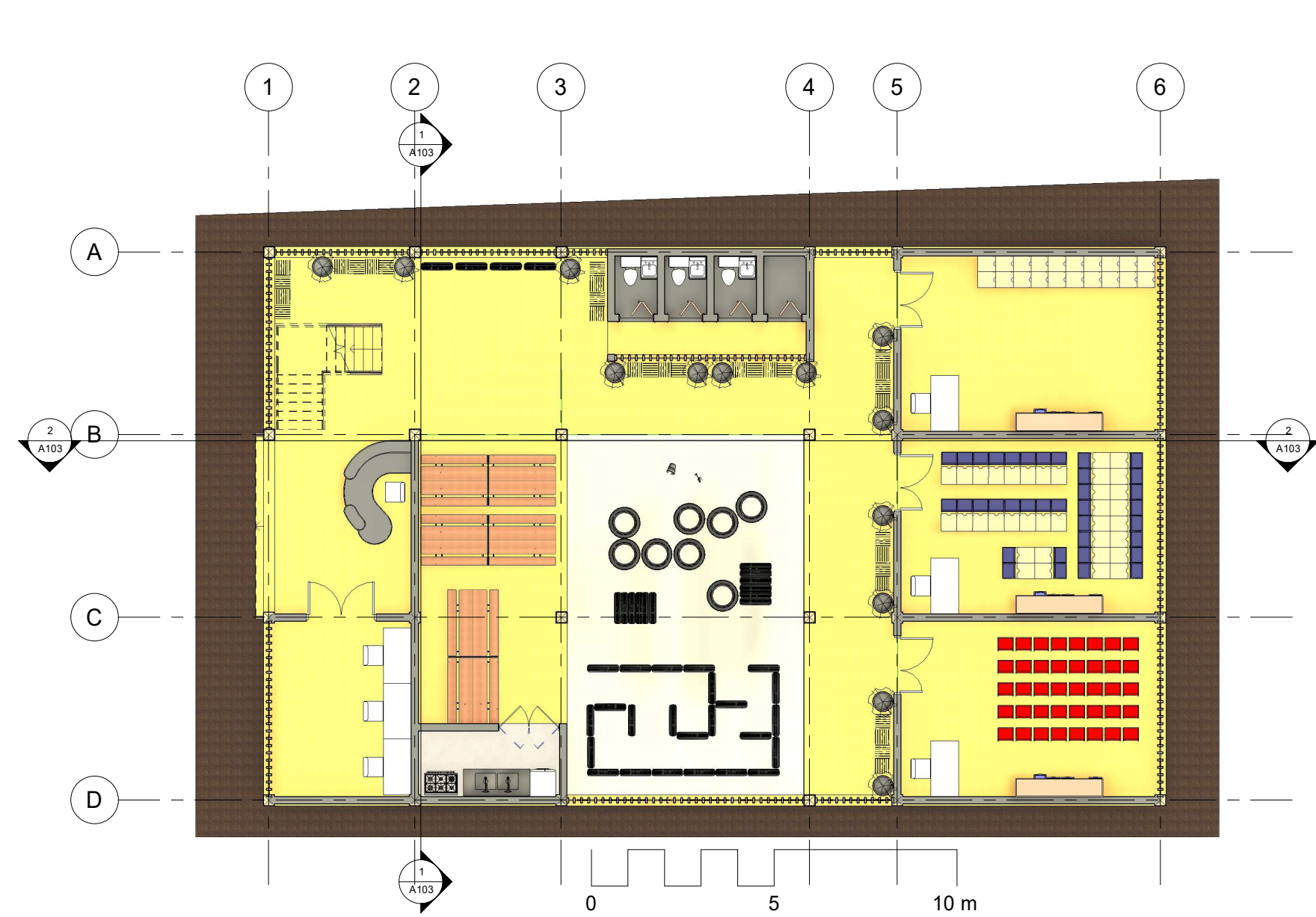
Bubble Diagram



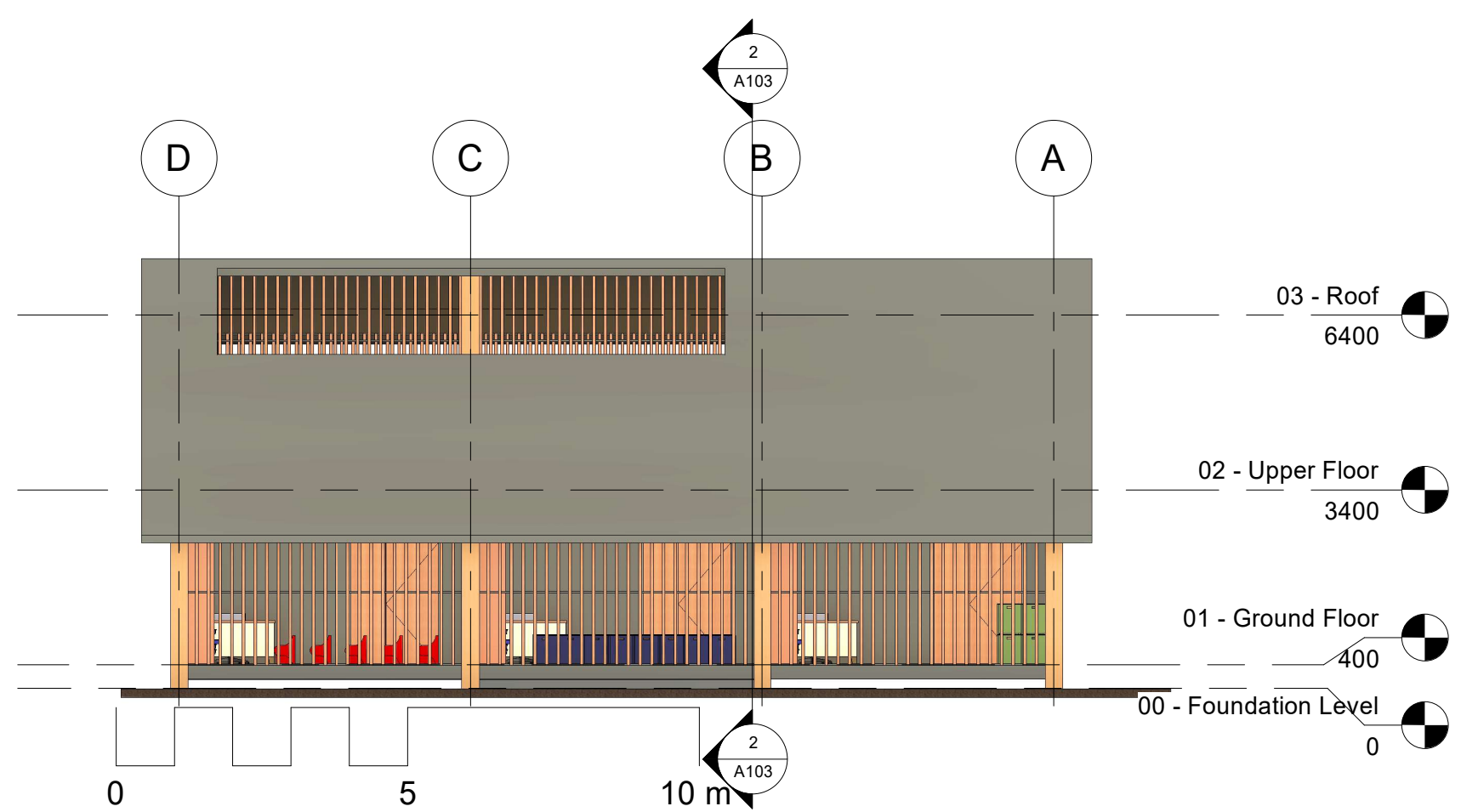
Precedents



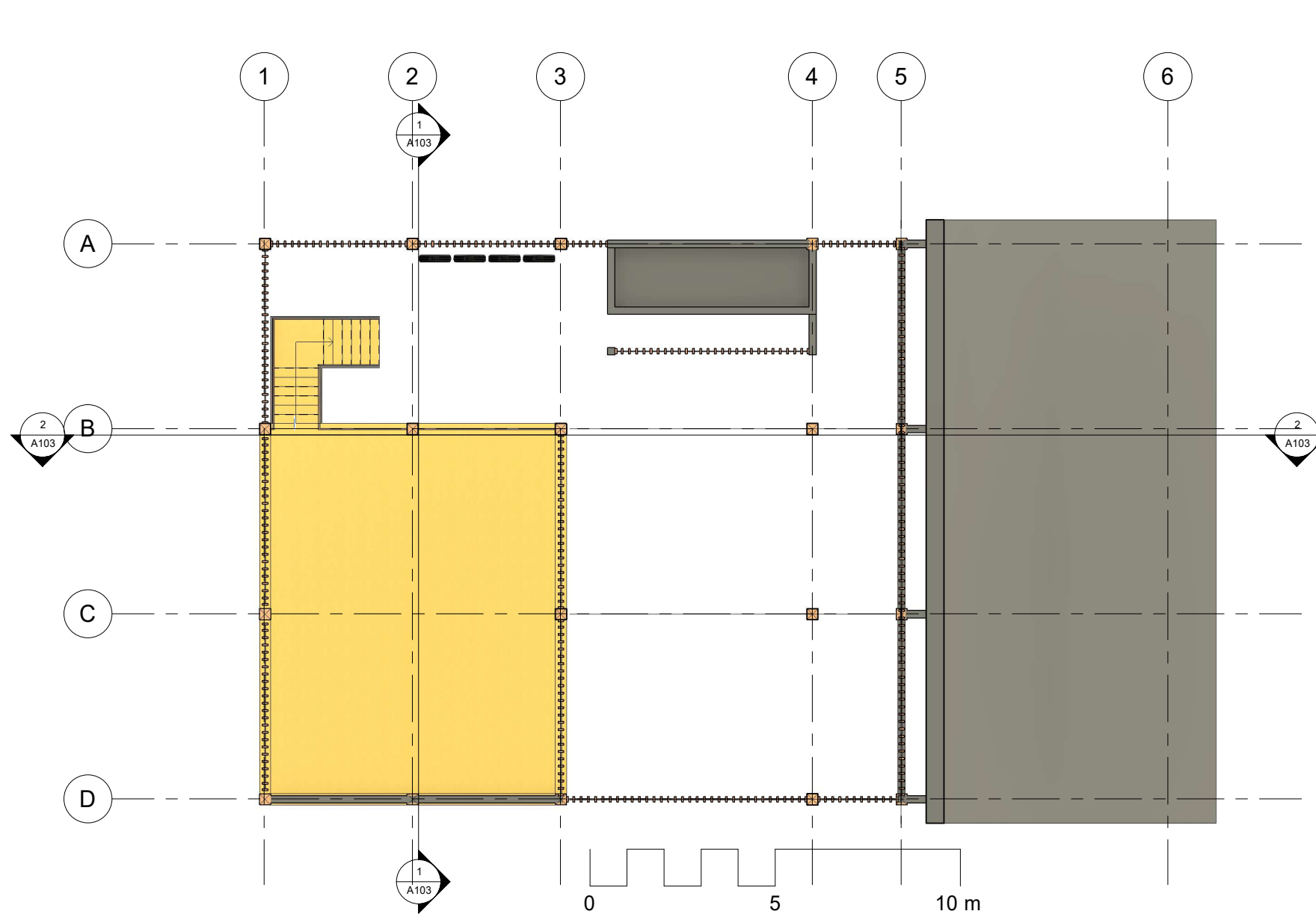
Ground Floor Plan



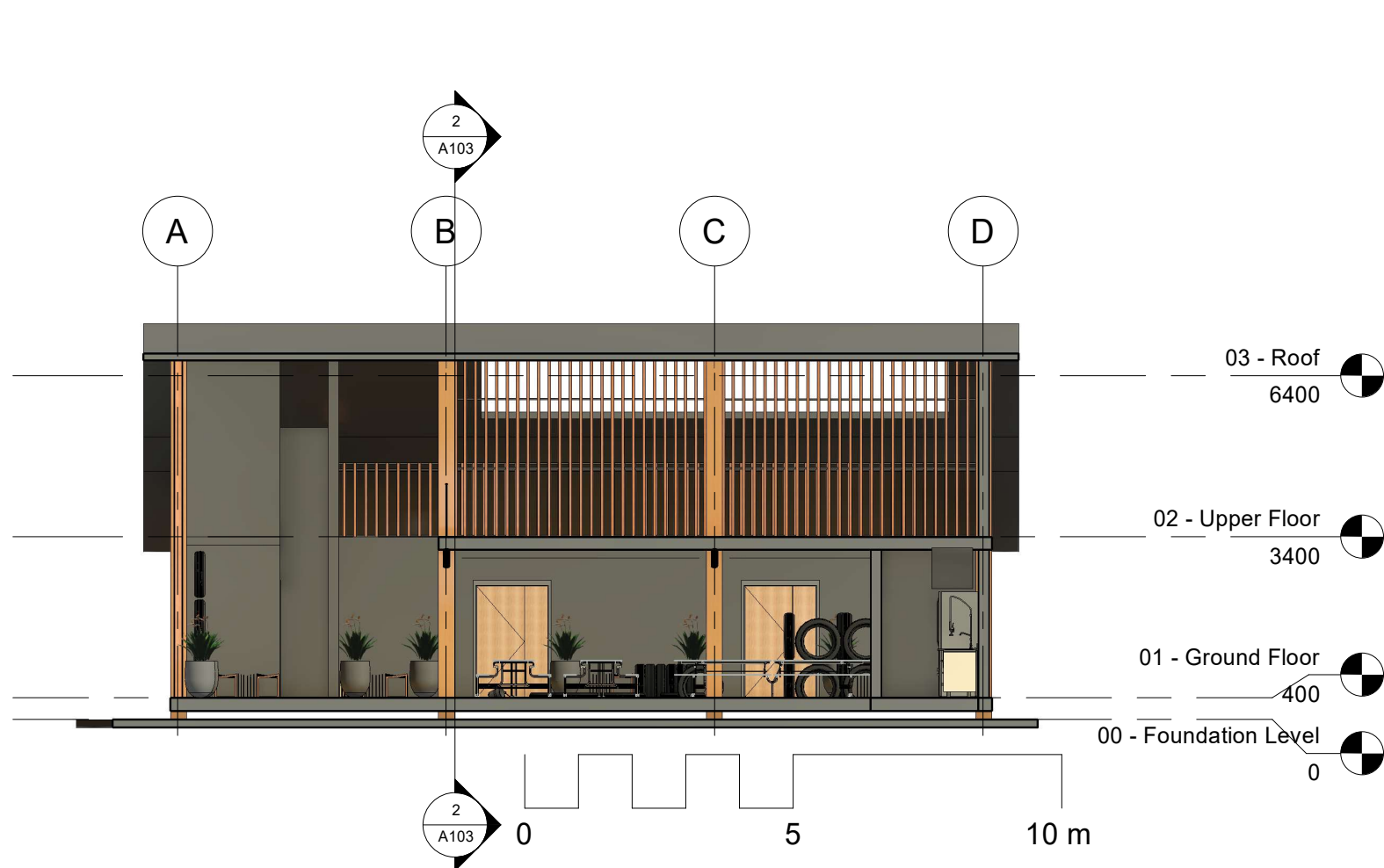
East Elevation (Back)



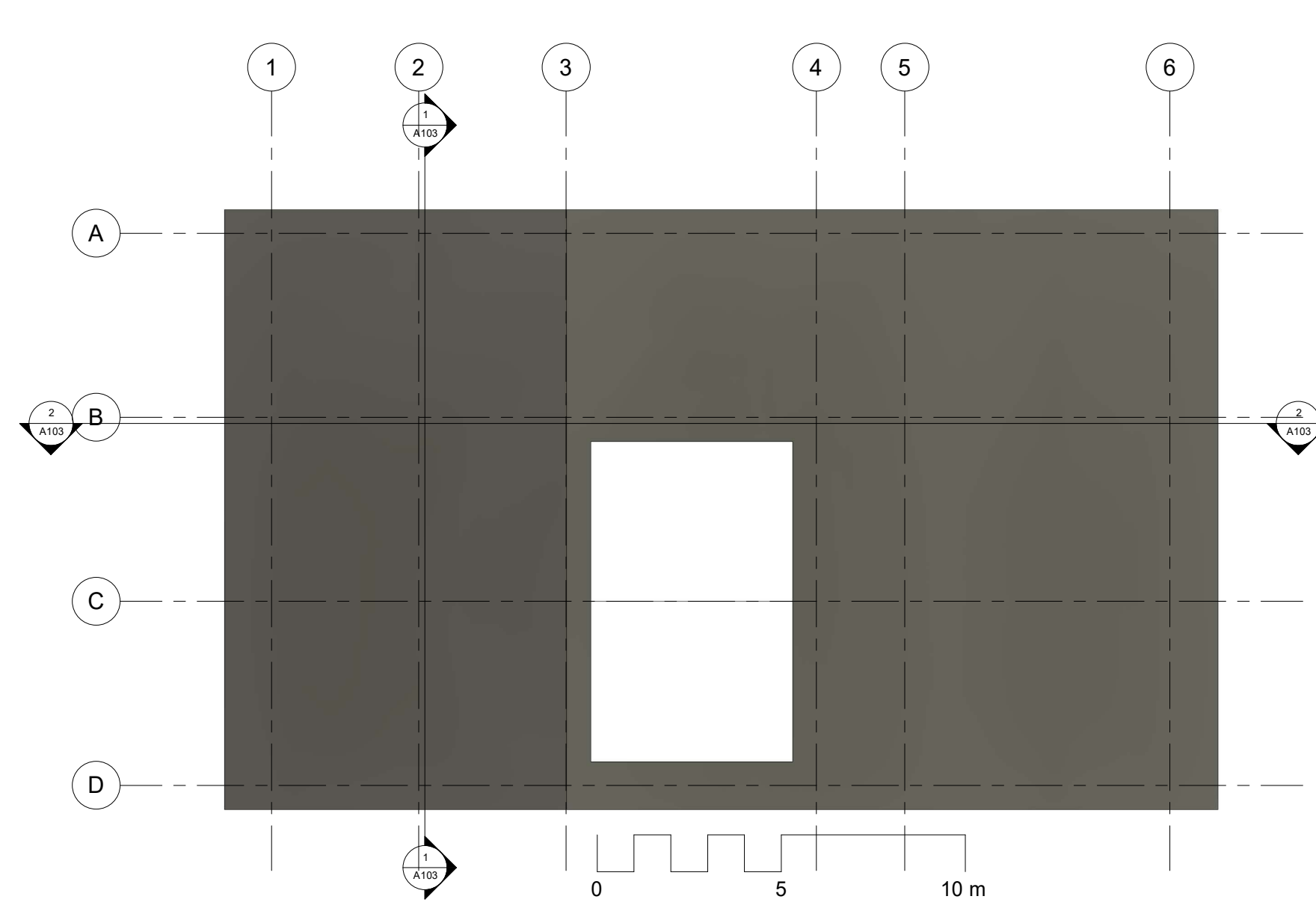
Upper Floor Plan



Section Cut 1



Roof Plan



Section Cut 2

